

IEC appliance inlet C8, snap-in mounting, front side, solder terminal



Snap-In Version

**Description**

- Panel Mount:
Snap-In Version, from front side
- Inlet, Pin temperature 70 °C, Protection class II
- Solder terminals

Approvals

- VDE License Number: 40017311
- UL License Number: E96454
- CSA License Number: 73165

Weblinks

Approvals, RoHS, CHINA-RoHS, e-Store, SCHURTER-Stock-Check, Distributor-Stock-Check

Technical Data

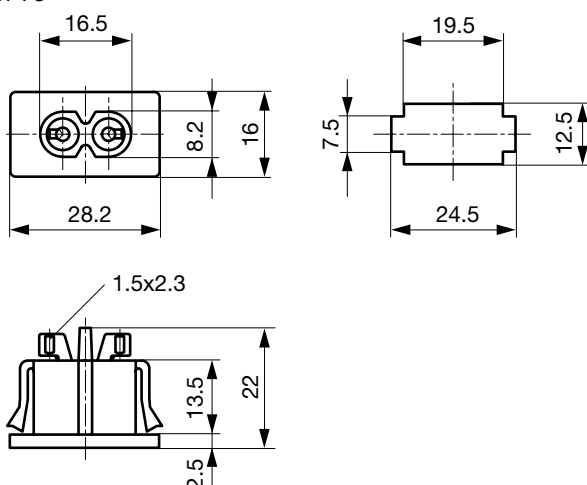
Ratings IEC	2.5 A / 250VAC; 50Hz
Ratings UL/CSA	2.5 A / 250VAC; 60Hz
Dielectric Strength	> 2 kVAC between L-N (1 min/50Hz)
Allowable Operation Temp.	-25 °C to 70 °C
Degree of Protection	from front side IP 40 acc. to IEC 60529
Protection Class	Suitable for appliances with protection class II acc. to IEC 61140
Terminal	Solder terminals
Panel Thickness s	Snap-in from 0.8 - 1.2 mm
Material: Housing	Thermoplastic, black, UL 94V-0

Appliance-Inlet/-Outlet	C8 acc. to IEC/EN 60320-1, UL 498, CSA C22.2 no. 42 (for cold conditions) pin-temperature 70 °C, 2.5 A, Protection class II
-------------------------	---

Dimensions

0721-PS

Length |-----| 28.2 mm



Solder terminals for wires

Variants

Distributor-Stock-Check | SCHURTER-Stock-Check | e-Store

Type	Panel mounting	Panel Thickness s [mm]	Terminal	Order Number
0721-PS	Snap-in	0.8 - 1.2	Solder terminals	4300.0098

Packaging unit

50 Pcs
